

Web ?????????? – ???????

??

[Nicky Zhu](#)

· ?? 8



????? 6 ??

Web ?????????? – ???????

?? Web ???

?????????? SOAP ?? HTTP ???????

3 ????????

????

????? Web ?????????????????

????

??? Ensemble ????????????????????

????

??? Ensemble ?????????????????? ?????????????????????????????????????

???????????

????? Web ?????????????“????”?????? ?????????????????????“????”????????? Web ?????
????????????????????????????????“????”??????????

???????????

??????????

Response Timeout

▶ Proxy Settings

▼ Additional Settings

Schedule

Pool Size

Reply Code Actions

Retry Interval

Failure Timeout

????

???? - ?? 7 ????

???? - ? 10 ?????

???? – 30 ??“??”??

??? 8 ???????????????

? 00:00???????????

? 00:07????????????????????“????”????“????”??“????”???????????????? – “????”????????????“????”?
[? 00:08?Web ???]

? 00:10????????????????????“????”????????? Web ???

? 00:17????????????????????“????”????????????“00:08/? 3 ?????????????“??/?”??

Web ?????????? – ??????

Published on InterSystems Developer Community (<https://community.intersystems.com>)

...

05/31/2016 14:19:05 *****

Input to Web service with SOAP action = <http://tempuri.org/Test.WSTimeouts.WebService.GetResponse>

...

05/31/2016 14:19:13 *****

Output from Web service with SOAP action = <http://tempuri.org/Test.WSTimeouts.WebService.GetResponse>

...

05/31/2016 14:19:15 *****

Input to Web service with SOAP action = <http://tempuri.org/Test.WSTimeouts.WebService.GetResponse>

...

05/31/2016 14:19:23 *****

Output from Web service with SOAP action = <http://tempuri.org/Test.WSTimeouts.WebService.GetResponse>

...

???? Ensemble BO/???????????? 4 ??????? 10 ????? 7 ?????????????

???

05/31/2016 14:18:45 *****

Output from Web client with SOAP action = <http://tempuri.org/Test.WSTimeouts.WebService.GetResponse>

...

05/31/2016 14:18:52 *****

Input to Web client with SOAP action = <http://tempuri.org/Test.WSTimeouts.WebService.GetResponse>

ERROR #5922: Timed out waiting for response

string**** SOAP client return error. method=GetResponse, action=<http://tempuri.org/Test.WSTimeouts.WebService.GetResponse>

ERROR #5922: Timed out waiting for response

05/31/2016 14:18:55 *****

Output from Web client with SOAP action = <http://tempuri.org/Test.WSTimeouts.WebService.GetResponse>

...

05/31/2016 14:19:02 *****

Input to Web client with SOAP action = <http://tempuri.org/Test.WSTimeouts.WebService.GetResponse>

ERROR #5922: Timed out waiting for response

string**** SOAP client return error. method=GetResponse, action=<http://tempuri.org/Test.WSTimeouts.WebService.GetResponse>

ERROR #5922: Timed out waiting for response

05/31/2016 14:19:05 *****

Output from Web client with SOAP action = <http://tempuri.org/Test.WSTimeouts.WebService.GetResponse>

Web ?????????? – ???????

Published on InterSystems Developer Community (<https://community.intersystems.com>)

...

05/31/2016 14:19:12 *****

Input to Web client with SOAP action = <http://tempuri.org/Test.WSTimeouts.WebService.GetResponse>

ERROR #5922: Timed out waiting for response

string**** SOAP client return error. method=GetResponse, action=<http://tempuri.org/Test.WSTimeouts.WebService.GetResponse>

ERROR #5922: Timed out waiting for response

05/31/2016 14:19:15 *****

Output from Web client with SOAP action = <http://tempuri.org/Test.WSTimeouts.WebService.GetResponse>

...

05/31/2016 14:19:22 *****

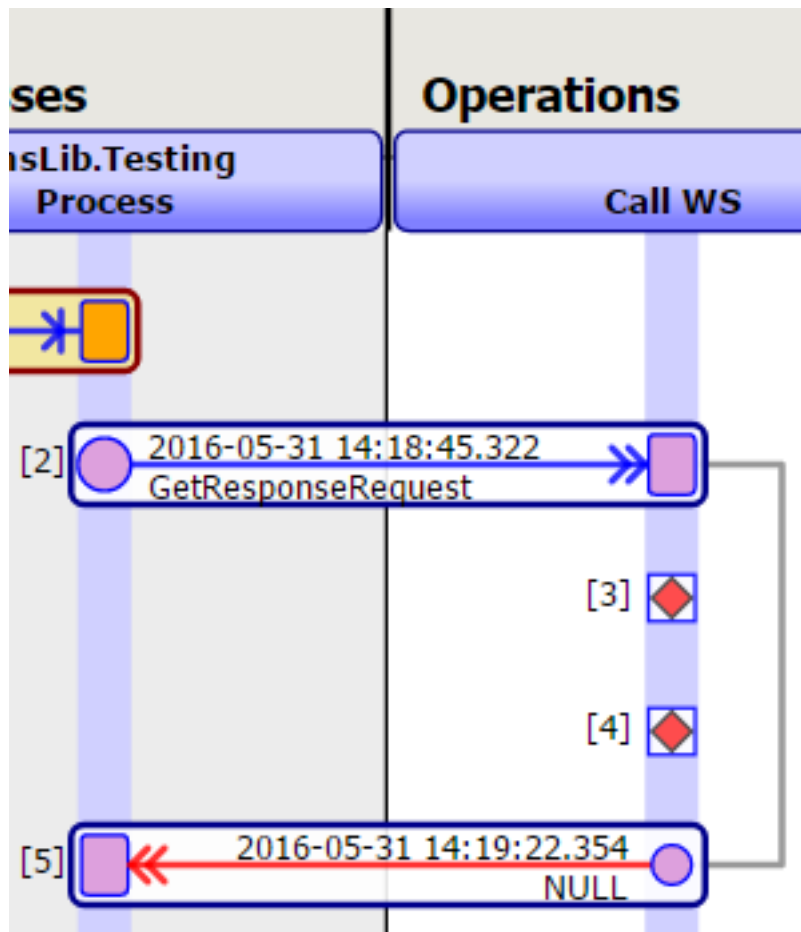
Input to Web client with SOAP action = <http://tempuri.org/Test.WSTimeouts.WebService.GetResponse>

ERROR #5922: Timed out waiting for response

string**** SOAP client return error. method=GetResponse, action=<http://tempuri.org/Test.WSTimeouts.WebService.GetResponse>

ERROR #5922: Timed out waiting for response

???? Ensemble ????????



???????????

Error	594	2016-05-31 14:19:22.354	131	8892	Call WS	ERROR <Ens>ErrFailureTimeout: FailureTimeout of 30 seconds exceeded in Test.WSTimeouts.BO.MyServiceSoap;
Error	593	2016-05-31 14:18:52.343	131	8892	Call WS	ERROR #5922: Timed out waiting for response

????????????????[????????????????????]?

Type	ID	Time Logged	Session	Job	Source	Text
Trace (queue)	712	2016-06-05 17:09:53.224		15200	Call WS	begin wait: -1
Trace (queue)	711	2016-06-05 17:09:53.224		15200	Call WS	dequeuing from Call WS with timeout=-1
Trace	710	2016-06-05 17:09:53.208		15200	Call WS	event "Ens Event("EnLib.Testing.Process")" already exists
Trace	709	2016-06-05 17:09:53.208		15200	Call WS	enqueueing #205 with body Class " and body Id " to EnLib.Testing.Process at priority 6
Error	708	2016-06-05 17:09:53.208	203	15200	Call WS	ERROR <Ens>ErrFailureTimeout: FailureTimeout of 30 seconds exceeded in Test.WSTimeouts.BO.MyServiceSoap; status from last attempt was ERROR #5922: Timed out waiting for response
Trace	707	2016-06-05 17:09:53.208	203	15200	Call WS	calling OnError R
Trace	706	2016-06-05 17:09:53.208	203	15200	Call WS	calling OnError R
Trace	705	2016-06-05 17:09:53.208	203	15200	Call WS	GetResponse() returned with status ERROR #5922: Timed out waiting for response, Retry=1, SuspendMessage=0, DeferResponse=0, Response=
Trace	704	2016-06-05 17:09:46.208	203	15200	Call WS	Retrying Request Header Id 204 - try #4
Trace (queue)	703	2016-06-05 17:09:46.208	203	15200	Call WS	dequeuing timed out
Trace (queue)	702	2016-06-05 17:09:43.208	203	15200	Call WS	begin wait: 3
Trace (queue)	701	2016-06-05 17:09:43.208	203	15200	Call WS	dequeuing from SystemSignal:15200 with timeout=2.971029
Trace	700	2016-06-05 17:09:43.208	203	15200	Call WS	calling OnError R
Trace	699	2016-06-05 17:09:43.208	203	15200	Call WS	GetResponse() returned with status ERROR #5922: Timed out waiting for response, Retry=1, SuspendMessage=0, DeferResponse=0, Response=
Trace	698	2016-06-05 17:09:36.182	203	15200	Call WS	Retrying Request Header Id 204 - try #3
Trace (queue)	697	2016-06-05 17:09:36.182	203	15200	Call WS	dequeuing timed out
Trace (queue)	696	2016-06-05 17:09:33.172	203	15200	Call WS	begin wait: 3
Trace (queue)	695	2016-06-05 17:09:33.172	203	15200	Call WS	dequeuing from SystemSignal:15200 with timeout=2.989901
Trace	694	2016-06-05 17:09:33.172	203	15200	Call WS	calling OnError R
Trace	693	2016-06-05 17:09:33.172	203	15200	Call WS	GetResponse() returned with status ERROR #5922: Timed out waiting for response, Retry=1, SuspendMessage=0, DeferResponse=0, Response=
Trace	692	2016-06-05 17:09:26.168	203	15200	Call WS	Retrying Request Header Id 204 - try #2
Trace (queue)	691	2016-06-05 17:09:26.168	203	15200	Call WS	dequeuing timed out
Trace (queue)	690	2016-06-05 17:09:23.152	203	15200	Call WS	begin wait: 3
Trace	689	2016-06-05 17:09:23.152	203	15200	Call WS	event "Ens Event("SystemSignal:15200")" created
Trace (queue)	688	2016-06-05 17:09:23.152	203	15200	Call WS	dequeuing from SystemSignal:15200 with timeout=2.971514
Error	687	2016-06-05 17:09:23.152	203	15200	Call WS	ERROR #5922: Timed out waiting for response
Trace	686	2016-06-05 17:09:23.152	203	15200	Call WS	calling OnError R
Trace	685	2016-06-05 17:09:23.152	203	15200	Call WS	GetResponse() returned with status ERROR #5922: Timed out waiting for response, Retry=1, SuspendMessage=0, DeferResponse=0, Response=
Trace	684	2016-06-05 17:09:16.136		15200	Call WS	dequeuing from Call WS found message #204 with body Class 'Test.WSTimeouts.Msg.GetResponseRequest' and body Id '94' and SessionId '203'
Trace (queue)	683	2016-06-05 17:09:16.136		15200	Call WS	dequeuing received an event
Trace (queue)	671	2016-06-05 17:09:08.197		15200	Call WS	begin wait: -1

Web ?????????? – ??????

Published on InterSystems Developer Community (<https://community.intersystems.com>)

????????????????“????”?

???? ID #684???????? – ???17:09:16?

???? 7 ??? (09:23)???????????? (#685)? ????????????? (#687)?????? 3 ?????????????????10 ?????????? 7 ????????? (#688-#690)?

?? 3 ??? 09:26??691???????? 2 ??? (#692)???????????????? 4 ??? (#704)? ?? 4
??????09:53??705????????????????30 ?????????????????

[#SOAP #???? #Ensemble](#)

00 3 0 0 43

Log in or sign up to continue

????

? **URL:** <https://cn.community.intersystems.com/post/web-%E6%9C%8D%E5%8A%A1%E4%B8%9A%E5%8A%A1%E6%93%8D%E4%BD%9C%E5%AE%A2%E6%88%B7%E7%AB%AF-%E2%80%93%E5%93%8D%E5%BA%94%E8%B6%85%E6%97%B6%E8%A1%8C%E4%B8%BA>