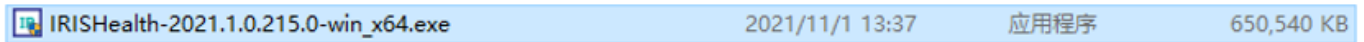


文章

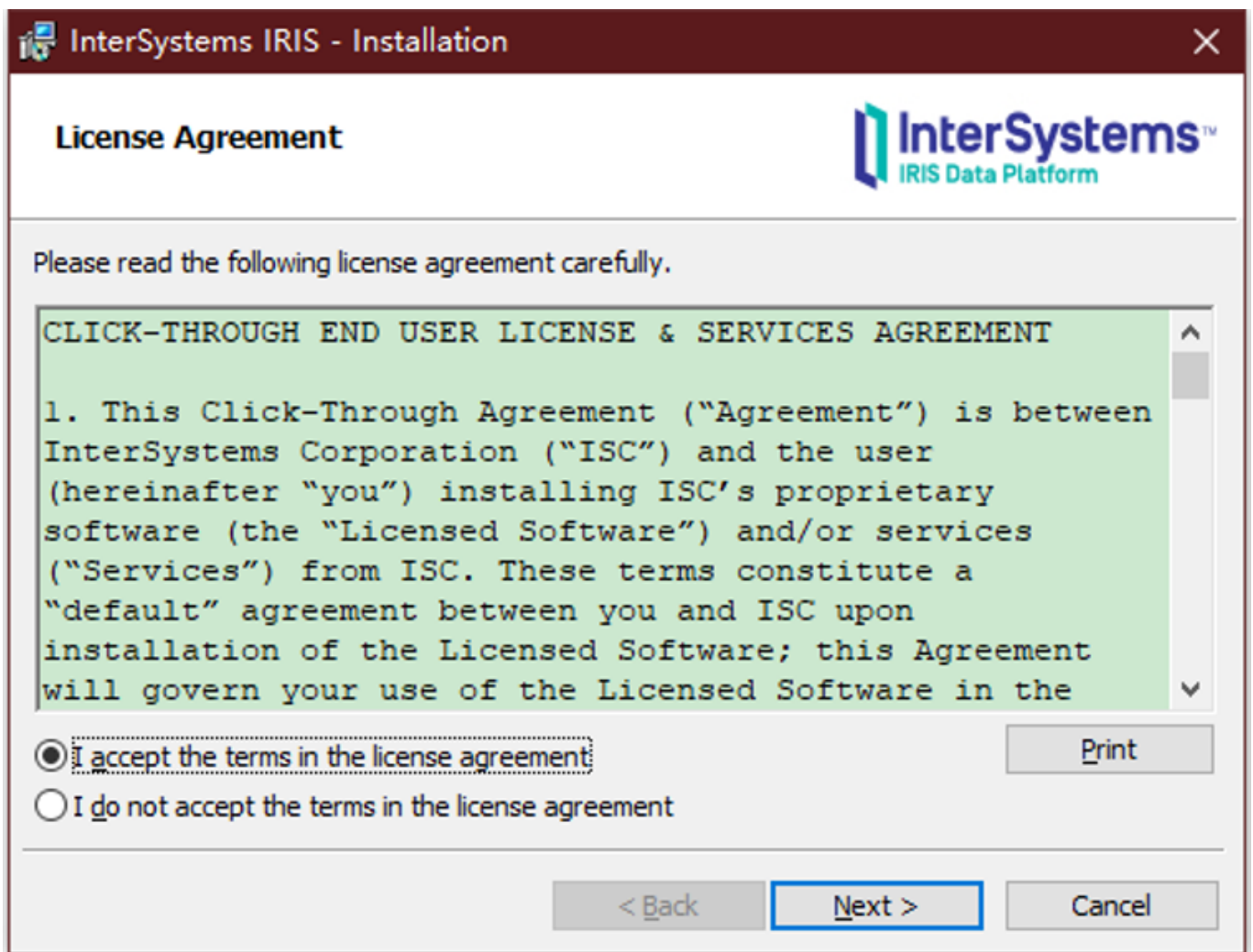
Jingwei Wang · 六月 6 阅读大约需分钟

## windows版InterSystems IRIS安装步骤

双击安装文件



选择同意协议,下一步



实例名称默认IRISHEALTH,不~~需~~修改直接下一步

**InterSystems IRIS Instance Name**

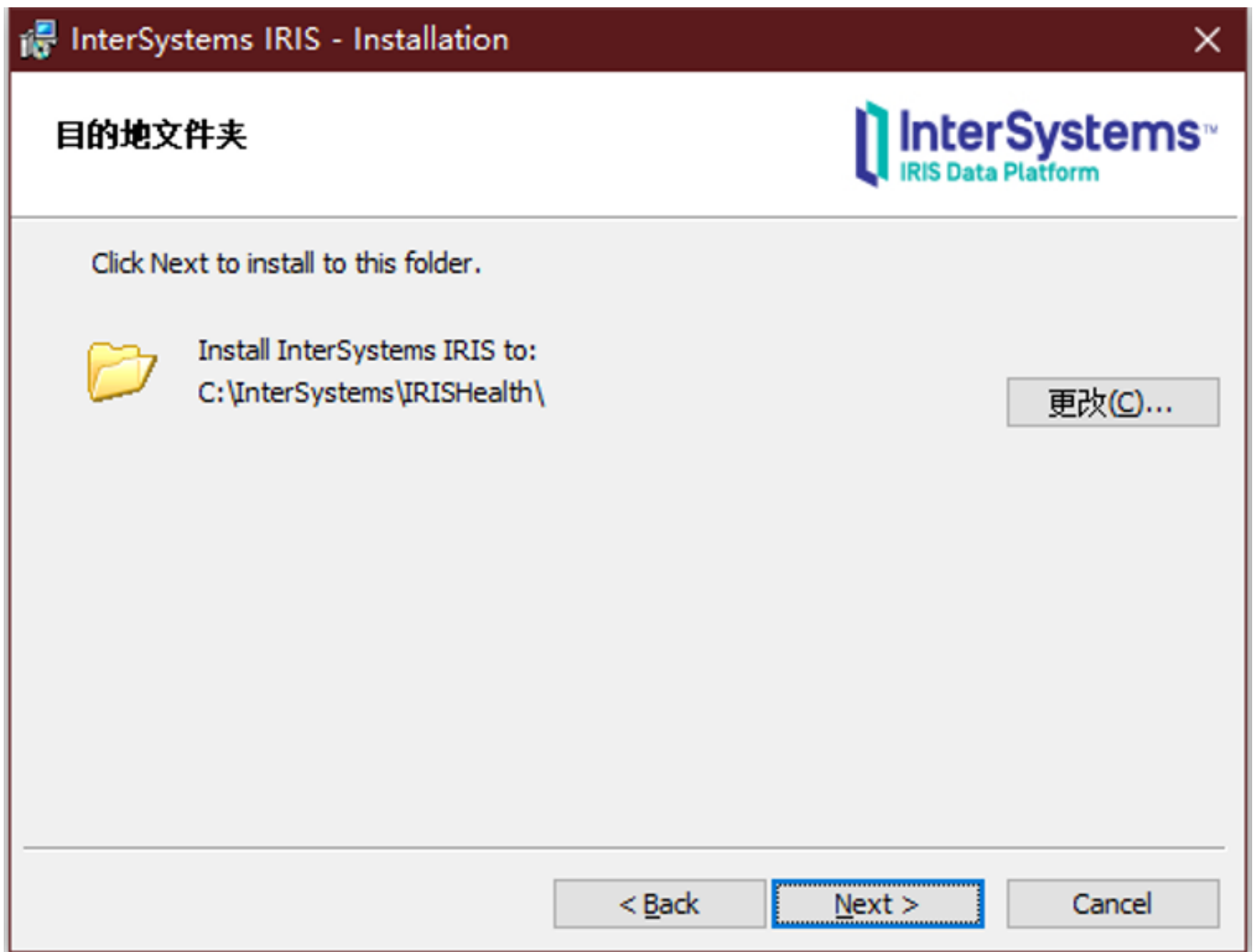
Multiple copies of InterSystems IRIS can be installed on the same machine, each has to have a unique name. Define a name for the current InterSystems IRIS instance.

InterSystems IRIS Instance Name:

IRISHealth1

< Back   Next >   Cancel

安装路径,可修但不可使用中文路径



安装类型选择Development, 点击下一步

InterSystems IRIS - Installation

安装类型

InterSystems™  
IRIS Data Platform

选择最适合自己需要的安装类型。

**Development**      Installs InterSystems IRIS server, InterSystems IRIS Studio, xDBC and all supported language bindings.

**Server**      Installs InterSystems IRIS server and Web Gateway.

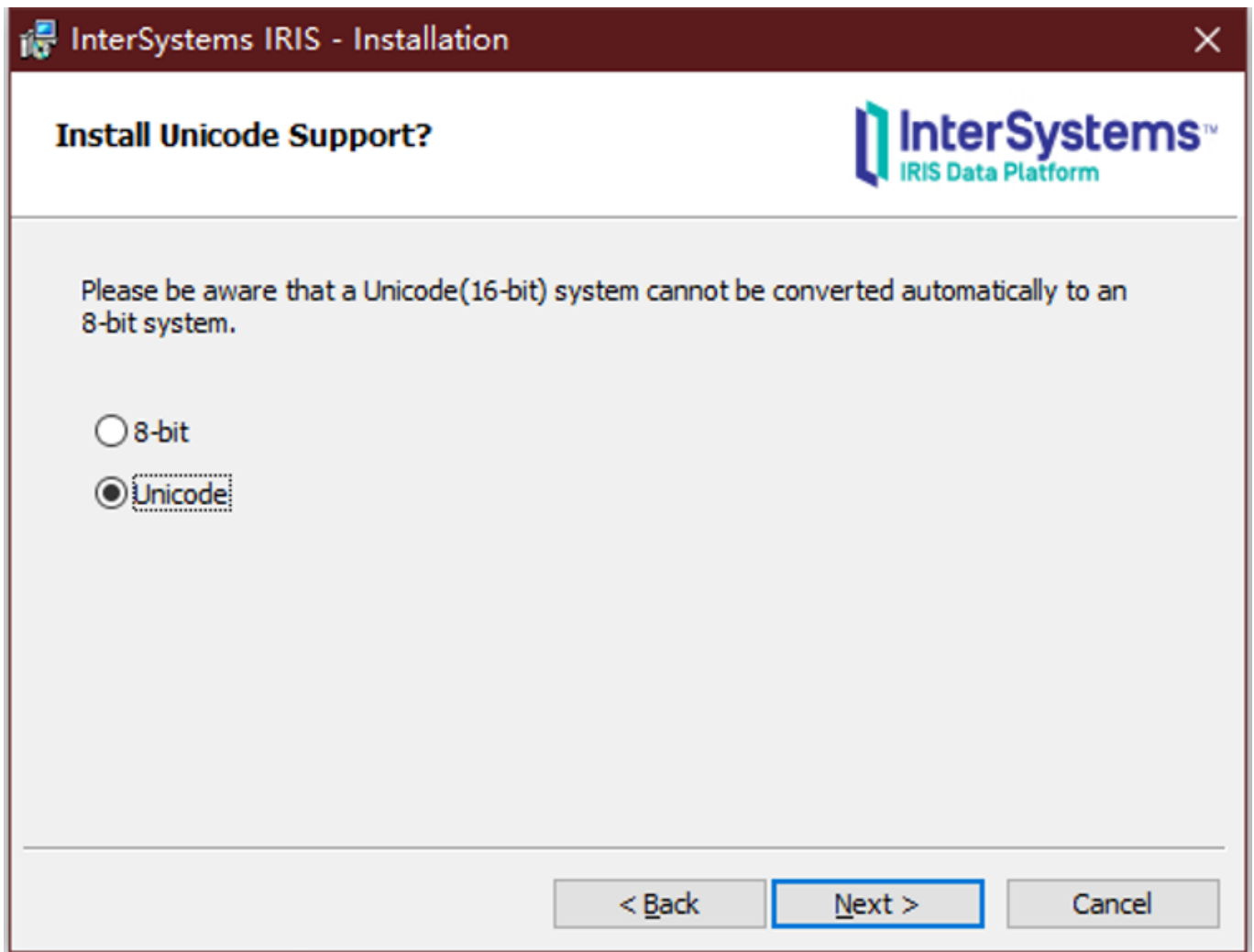
**Client**      Installs InterSystems IRIS Studio and xDBC.

**Web Server**      Installs Web Gateway.

**Custom**      Specify the list of features you want installed.

< Back    Next >    Cancel

选择Unicode, 下一步



选择Normal,下一步

**InterSystems IRIS - Installation**

**InterSystems IRIS Users configuration**

**InterSystems™**  
IRIS Data Platform

Setup will create the following InterSystems IRIS accounts for you: `_SYSTEM`, Admin, SuperUser, xym and CSPSystem. Please enter and confirm the common password for accounts `_SYSTEM`, Admin, SuperUser, and xym.

Password for InterSystems IRIS accounts:

Confirm Password:

< Back   Next >   Cancel

默认选项,不做修一步

**InterSystems IRIS - Installation**

### InterSystems IRIS Users configuration

InterSystems™  
IRIS Data Platform

Setup will create the following InterSystems IRIS accounts for you: \_SYSTEM, Admin, SuperUser, xym and CSPSystem. Please enter and confirm the common password for accounts \_SYSTEM, Admin, SuperUser, and xym.

Password for InterSystems IRIS accounts:

Confirm Password:

< Back   Next >   Cancel

输入IRIS管理账户密码

**InterSystems IRIS - Installation**

**InterSystems IRIS Users configuration**

**InterSystems™**  
IRIS Data Platform

Setup will create the following InterSystems IRIS accounts for you: \_SYSTEM, Admin, SuperUser, xym and CSPSystem. Please enter and confirm the common password for accounts \_SYSTEM, Admin, SuperUser, and xym.

Password for InterSystems IRIS accounts:

Confirm Password:

< Back   Next >   Cancel

输入CSP服务管理密码,和上一步密码保持一致。



InterSystems IRIS - Installation

### InterSystems IRIS Users configuration

InterSystems™  
IRIS Data Platform

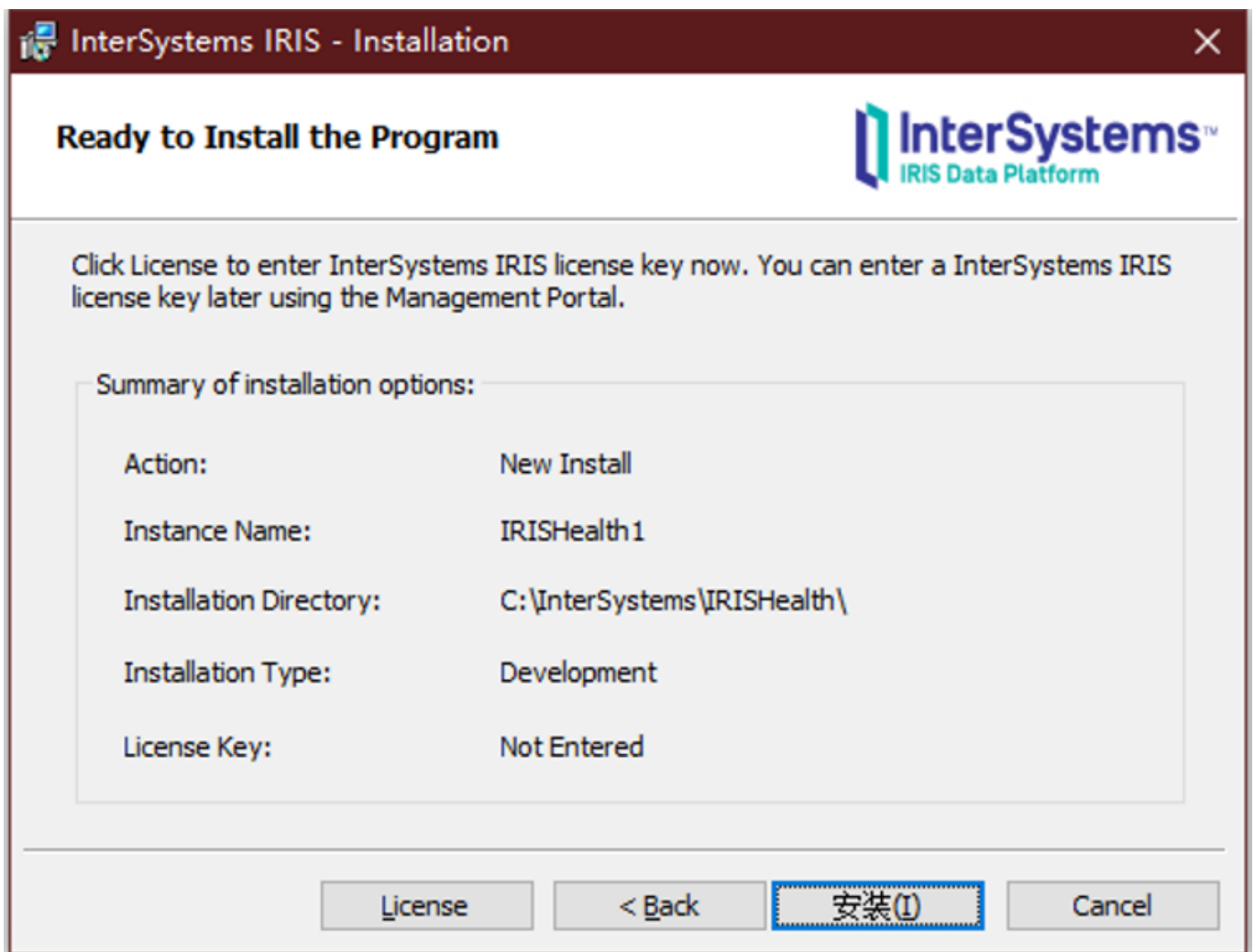
Enter password for CSPSystem account.

Password for CSPSystem account:

Confirm Password:

< Back   **Next >**   Cancel

点击安装, 等待安装完成



[#InterSystems IRIS for Health](#)

源 URL: <https://cn.community.intersystems.com/post/windows%E7%89%88intersystems-iris%E5%AE%89%E8%A3%85%E6%AD%A5%E9%AA%A4>